

Corrosion Deposit

Figure 1: The presence of corrosion was apparent at the crack origin of a torsional fatigue fracture on a high-temperature alloy spring. An Energy Dispersive X-Ray Spectroscopy (EDS) was done on the area in the yellow rectangle. The EDS results are presented in Figure 2.

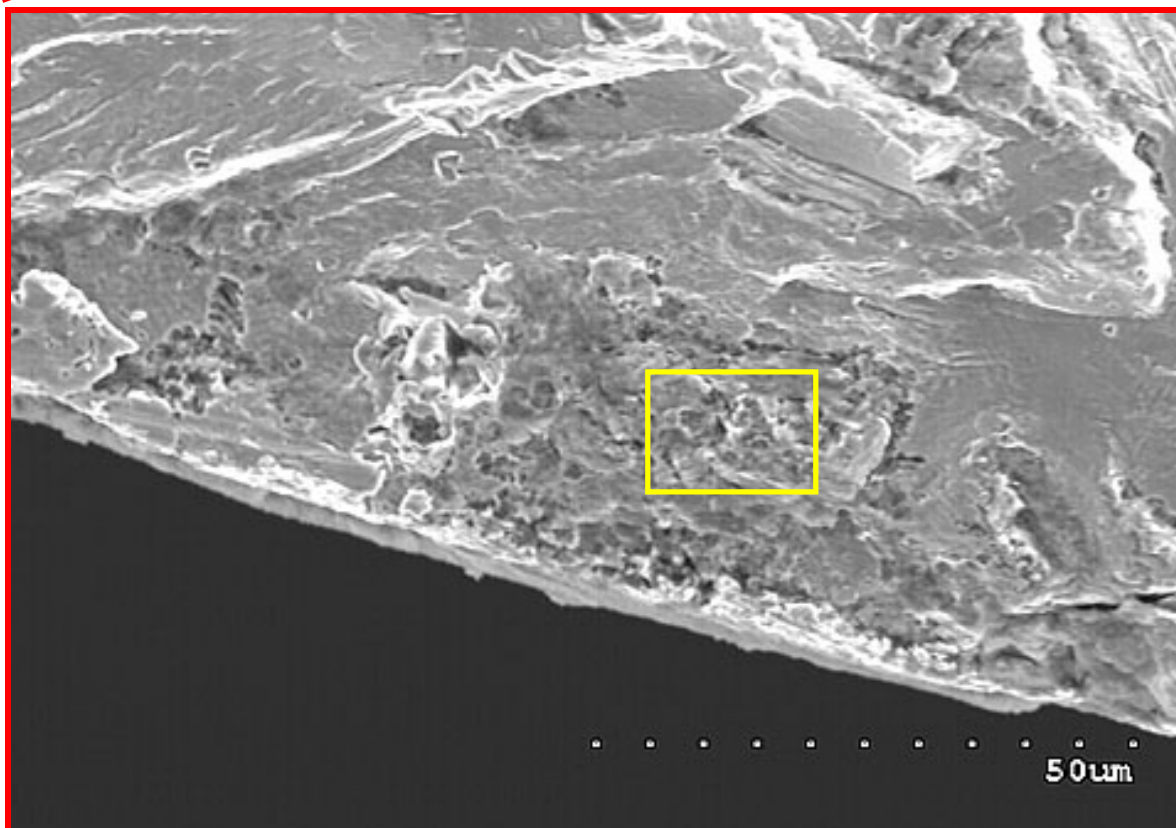
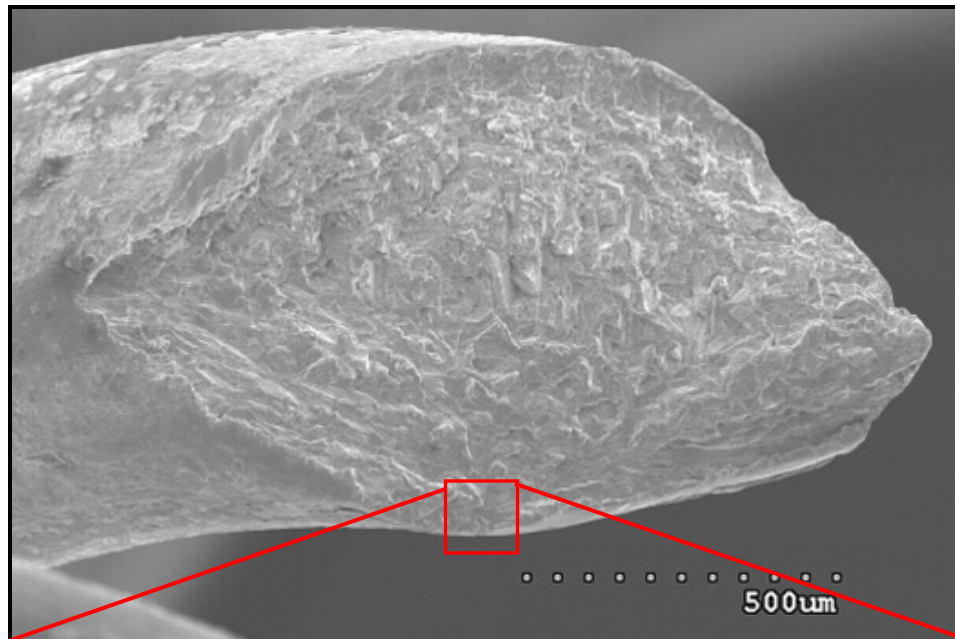


Figure 2: The EDS output from the oxidized/corroded area outlined in yellow from the figure above, containing a very strong oxygen and chlorine peak.

